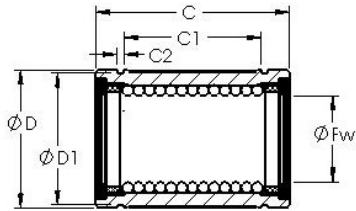


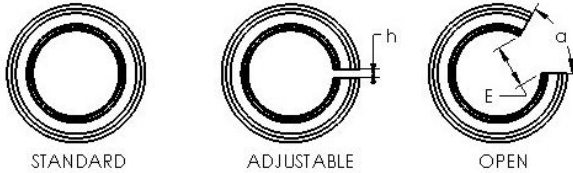


# BEARING de Mexico?S.A.



## AST LBE 40 AJ Linear bearings

Bearing No. LBE 40 AJ



Bore Diameter	40 mm
Bearing Type	adjustable clearance type
Dynamic Load Rating (Cr)	2,710
Static Load Rating (Cor)	4,890
Shaft Dia. (Fw)	40.000
Outside Dia. (D)	62.000
Length ( C )	80.000
Groove-to-groove length (C1)	56.000
Groove Width (C2)	2.100
Groove Dia. (D1)	59.000
Adjustable Open Gap (h)	2.000
Weight (g)	545.00
Material	52100 chrome steel, or equivalent

LBE 40 AJ Bearing 2D drawings and 3D CAD models