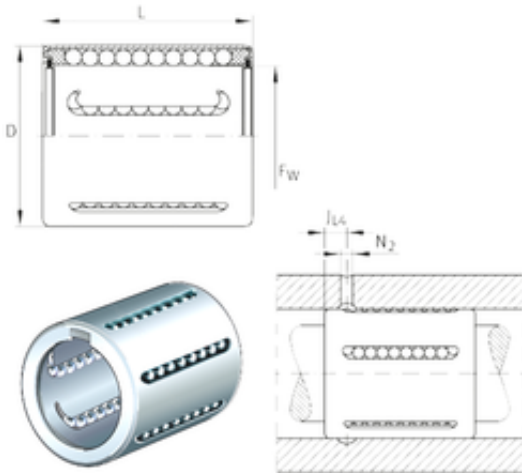




BEARING de Mexico?S.A.

INA KH50-PP Linear bearings

Bearing No. KH50-PP



Bore Diameter	50 mm
Outer Diameter	62 mm
Fw	50 mm
D	62 mm
N2	2,5 mm
L	70 mm
JL4	9 mm
Weight	0,252 Kg
Basic dynamic load rating (C)	6,8 kN

KH50-PP Bearing 2D drawings and 3D CAD models