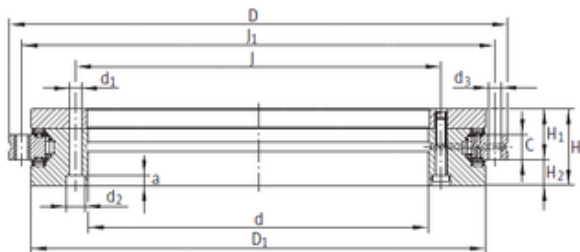




BEARING de Mexico?S.A.

INA YRTS460 Complex bearings



Bearing No. YRTS460

Size	460x600x22 mm
Bore Diameter	460 mm
Outer Diameter	600 mm
Width	22 mm
d	460 mm
D	600 mm
C	22 mm
H	70 mm
a	8,2 mm
d1	9,3 mm
d2	15 mm
d3	9,3 mm
D1	560 mm
H1	46 mm
H2	24 mm
J	482 mm
J1	580 mm
Weight	45 Kg
Dynamic load rating radial (C)	168 kN
Dynamic load rating axial (C)	221 kN
Static load rating radial (C0)	570 kN
Static load rating axial (C0)	1690 kN

YRTS460 Bearing 2D drawings and 3D CAD models