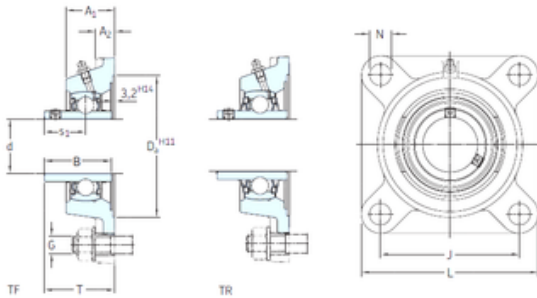




BEARING de Mexico?S.A.

SKF FY 20 WF Ball bearings units

Bearing No. FY 20 WF



FY 20 WF Bearing 2D drawings and 3D CAD models

Bore Diameter	20 mm
d	20 mm
Da	68,3 mm
s1	26,6 mm
A1	29,5 mm
B1	43,7 mm
G	10 mm
J	63,5 mm
L	86 mm
N	11,5 mm
T	45,6 mm
A2	11 mm
Weight	0,65 Kg
Basic dynamic load rating (C)	12,7 kN
Basic static load rating (C0)	6,55 kN
Fatigue load limit (Pu)	0,28
Housing material	Cast iron
D _a	68.3 mm
D _{b1}	57 mm
D _{b2}	63 mm
A	29.5 mm
A ₁	11 mm
A ₃	3.2 mm
A ₅	18.5 mm
B ₁	43.7 mm
s ₁	26.6 mm



BEARING de Mexico?S.A.

R_G	1/4-28 UNF
R_1	20.5 mm
D_N	6.5 mm
SW_N	7 mm
G_N	1/4-28 SAE-LT
J_6	74 mm
J_7	16 mm
N_4	4 mm
Basic dynamic load rating C	12.7 kN
Basic static load rating C_0	6.55 kN
Fatigue load limit P_u	0.28 kN
Limiting speed	8500 r/min
Mass bearing unit	0.57 kg
Thread grub screw G_2	M6x0.75
Hexagonal key size for grub screw N	3 mm
Recommended tightening torque for grub screw	4 N · m
Recommended diameter for attachment bolts, mm G	10 mm
Recommended diameter for attachment bolts, inch G	0.375 in